

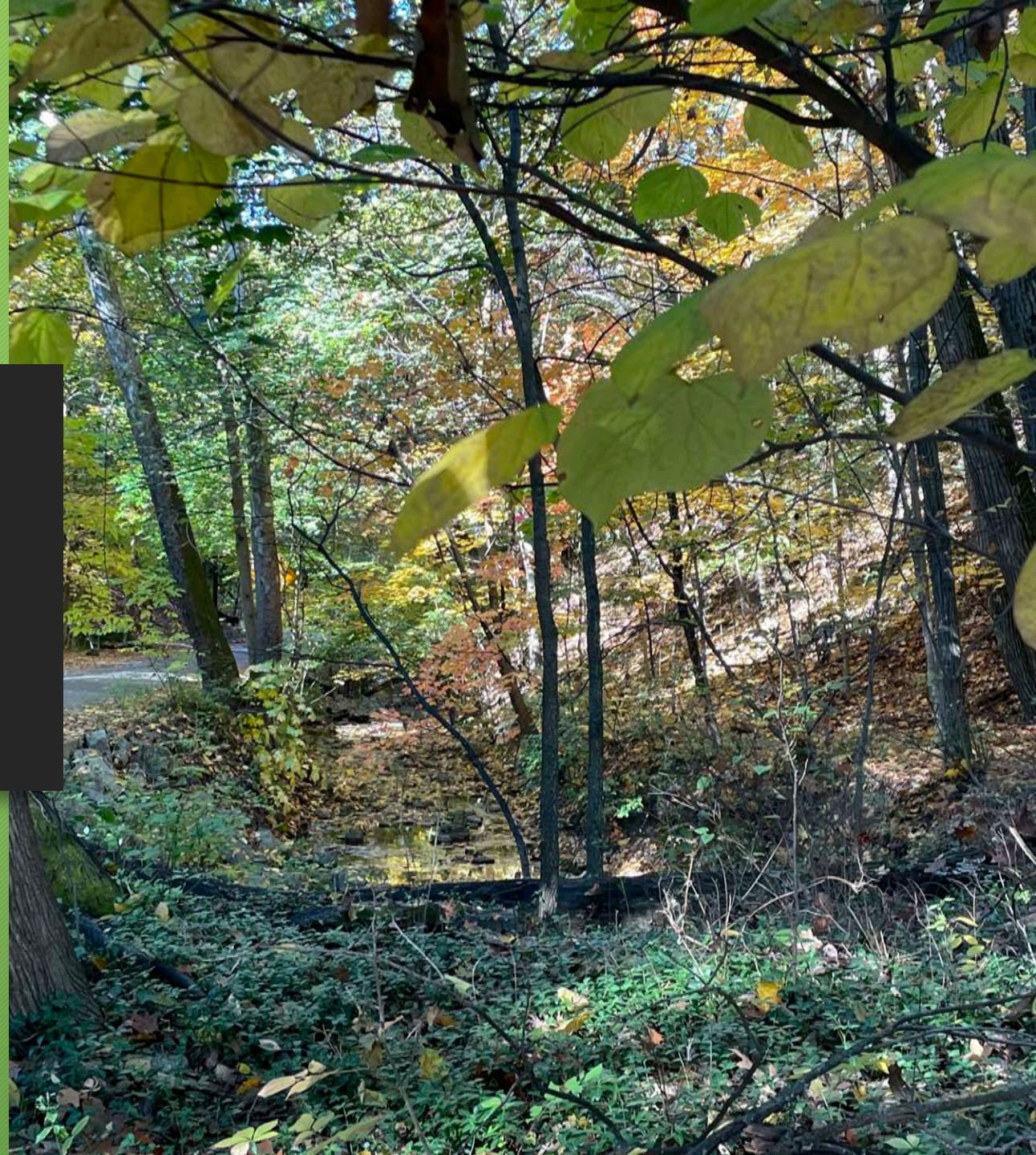
Walhalla Ravine A natural preserve

Community Concerns about the City of
Columbus Plan

Winter 2024

savewalhallaravine@gmail.com

Savetheravine.com



Save Walhalla Ravine Organizing Committee

- We are Columbus residents who love the Walhalla Ravine.
 - We walk, bike, and run in the ravine and worry about the safety for our children, dogs, and us due to changes planned by the City
 - We care about preserving natural spaces and worry about the loss of green spaces that will be replaced by artificial features
 - We care about the loss of habitat and the impacts on birds and wildlife living in the ravine
 - Our homes are in the ravine, and we will be directly impacted by the City Plan and feel left out of the process to determine what changes will be made
 - Our homes are near the ravine, and we are concerned how the City Plan may harm our property in the future or indirectly from the changes the City is proposing

Walhalla Ravine: the backstory

“The City of Columbus and Ohio EPA entered into a consent decree in 2002, which required the City to eliminate SSOs (sanitary sewer overflows) from its sanitary sewer system.”

“The city has developed a plan to restore a portion of the Walhalla Ravine. By restoring the banks on the Walhalla Ravine, sediment is prevented from entering the Olentangy River downstream...The work in the ravine allows us to have a bigger impact and decreases the number of rain gardens and pervious pavement sites needed to hit project goals. “

The City of Columbus communication to Clintonville 3 property owners, January 16, 2023, and January 29, 2024.

Walhalla Ravine: the backstory

“The larger problem is the Walhalla Ravine watershed has been expanded over time by the city’s storm sewer system, and simultaneously more of that watershed has been made impervious by the addition of roofs and roads and driveways and some super, massive parking lots. So, today we have a larger area that’s being drained into the ravine and that water is moving at a faster rate, and that’s what’s causing the erosion in the first place.”

Jake Boswell, associate professor, and undergraduate studies chair of landscape architecture at The Ohio State University.

Clintonville Spotlight, February 2024.

City's Plan for Walhalla Ravine

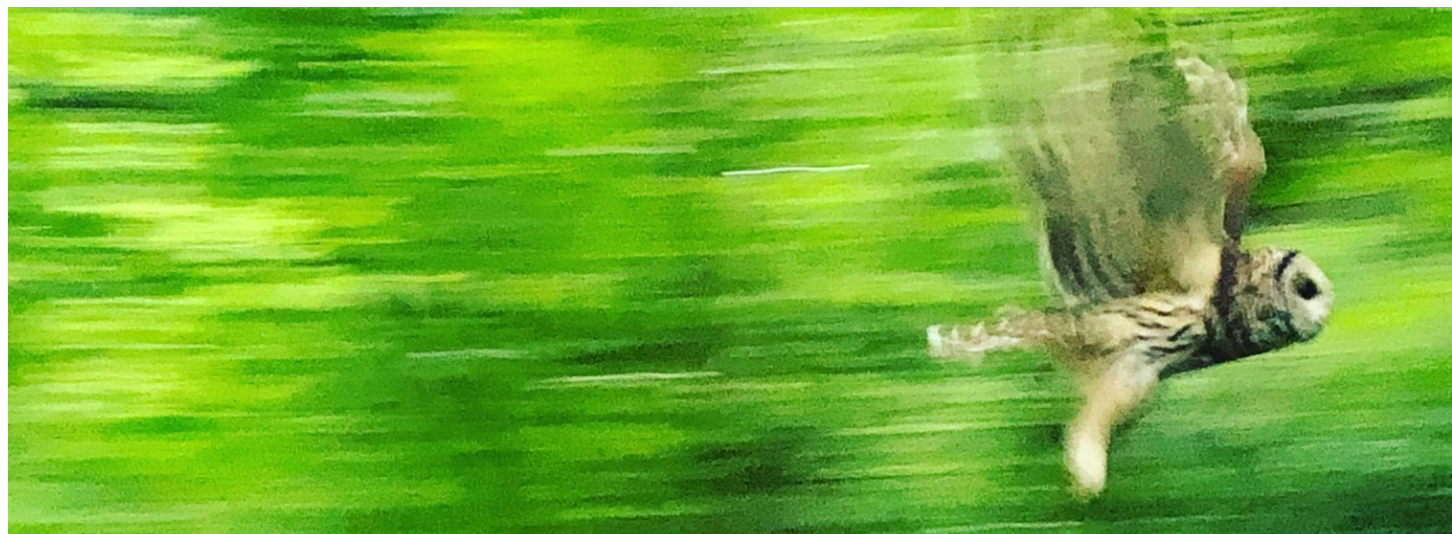
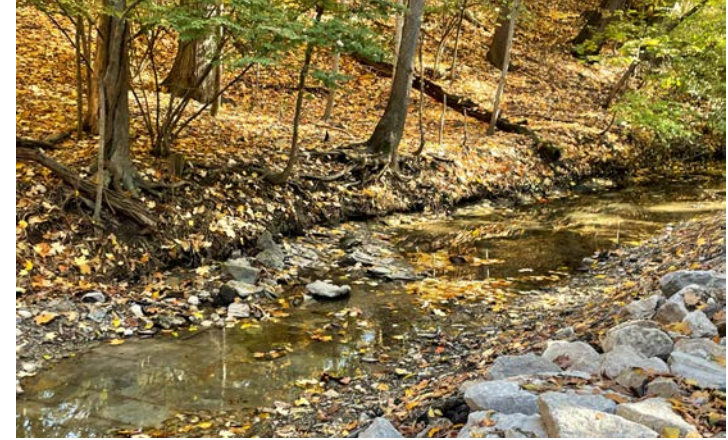
The current plan's real impact on the Ravine:

The City is proposing a road project that is being disguised as a ravine "restoration". The primary consideration is building a new roadway, not restoring the ravine and improving of its eco-system.

- ❖ 75% of the project cost is for the roadway improvement to install a prefabricated wall to support the new roadway being constructed from Clinton Heights to Longview.
- ❖ The roadway will be doublewide asphalt pavement and include highway guardrails.
- ❖ Some trees will be removed to make way for the new roadway.
- ❖ Rather than use green infrastructure, the City plans a low cost engineered approach to managing erosion.

The City is moving to begin construction in the Fall 2024

Our conclusion: The proposed changes will have a lasting impact on the ravine that takes the ravine in the wrong direction. We want a healthier ecosystem and an area where residents and visitors can feel the restorative/meditative effects of being in nature.



Walhalla Ravine

Walhalla Ravine is one of the most unique and beautiful areas in Columbus. Regarded for its exceptional natural beauty, the ravine offers great scenic views and wildlife, making you feel like you are in a nature preserve far from the flat landscape of Columbus. Walhalla Ravine was created approximately between 10,000 - 110,000 years ago by the Wisconsin glacier as it moved across Ohio during the last glacial period, radically changing the state's geography.

Ravine homes are incorporated into the hillsides and surrounded by trees and native wildlife. Area residents take great pride in maintaining the ravine, annually removing invasive plant materials and replacing them with Ohio plants.

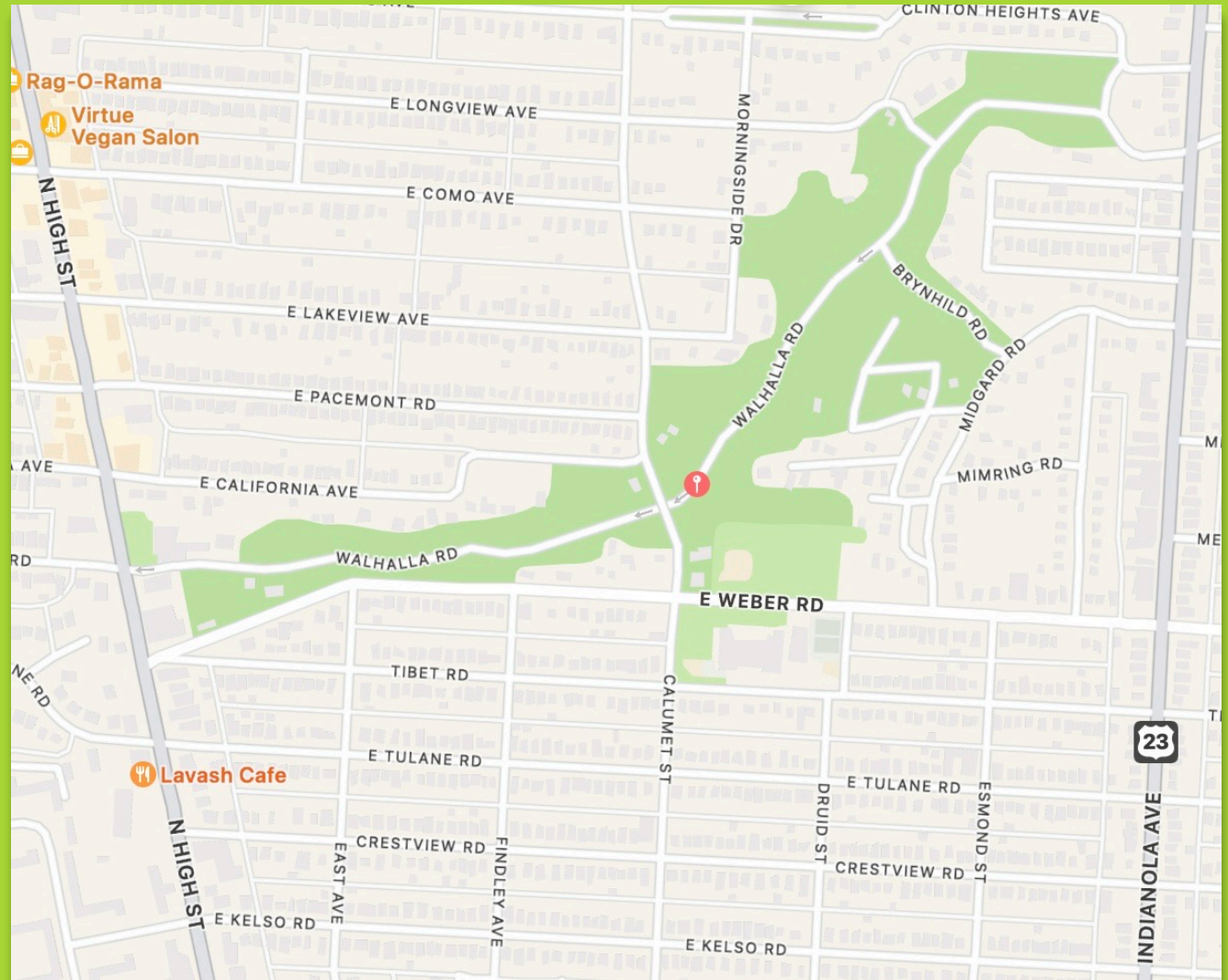
<https://www.columbusmakesart.com/place/10446-walhalla-ravine>



Entrance to Walhalla Ravine

Walhalla Ravine

- The ravine extends from Indianola on the east to High Street on the west.
- The Walhalla stream bed is adjacent to the roadway and traverses it at various points.
- It is a one-way street except for a very short section between Indianola and Clinton Heights that is two-way.
- Longview and Brynhild connect into the one-way section of the road.
- 8 homes have active driveways that connect to the road. None are in the section between Clinton Heights and Longview (the primary section impacted by the plan).
- Pedestrians, cyclists, dogs, deer, and motor vehicles share the roadway.
 - Non-motorized uses are predominant



City of Columbus

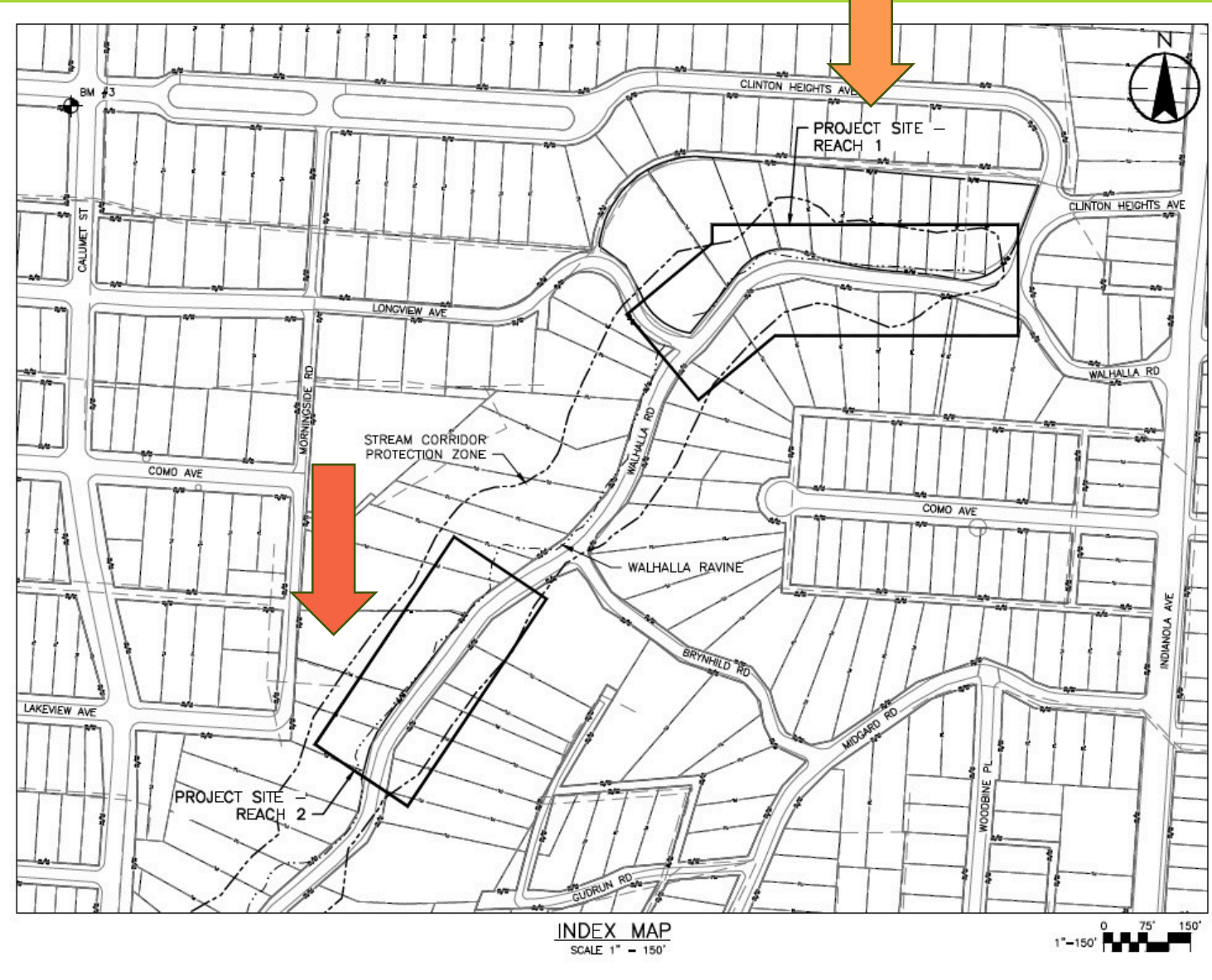
CAPITAL IMPROVEMENT PROJECT CIP NO. 650870-110164 WALHALLA RAVINE RESTORATION CITY OF COLUMBUS, OHIO

• Reach 1

- Clinton Heights (north end) to Longview (south end)

• Reach 2

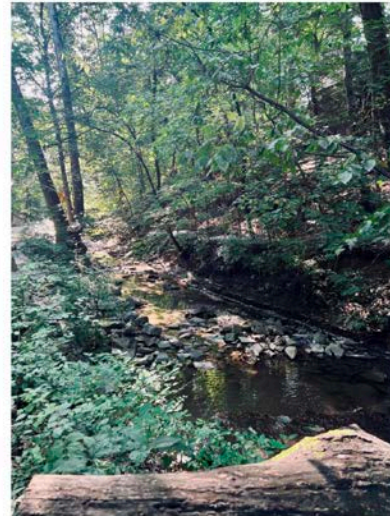
- Brynhild (north end) to below Lakeview (south end) *just one property within the reach will be impacted



City Announces Plans for Walhalla Ravine

Why prioritize work in Walhalla Ravine?

- The work in the ravine allows us to have a bigger impact
- Decreases the number of rain gardens and pervious pavement sites needed to hit project goals



Walhalla Ravine Restoration Project

Detailed Design Meeting

October 10, 2023
6:30 PM – 8:00 PM

Four Pillars

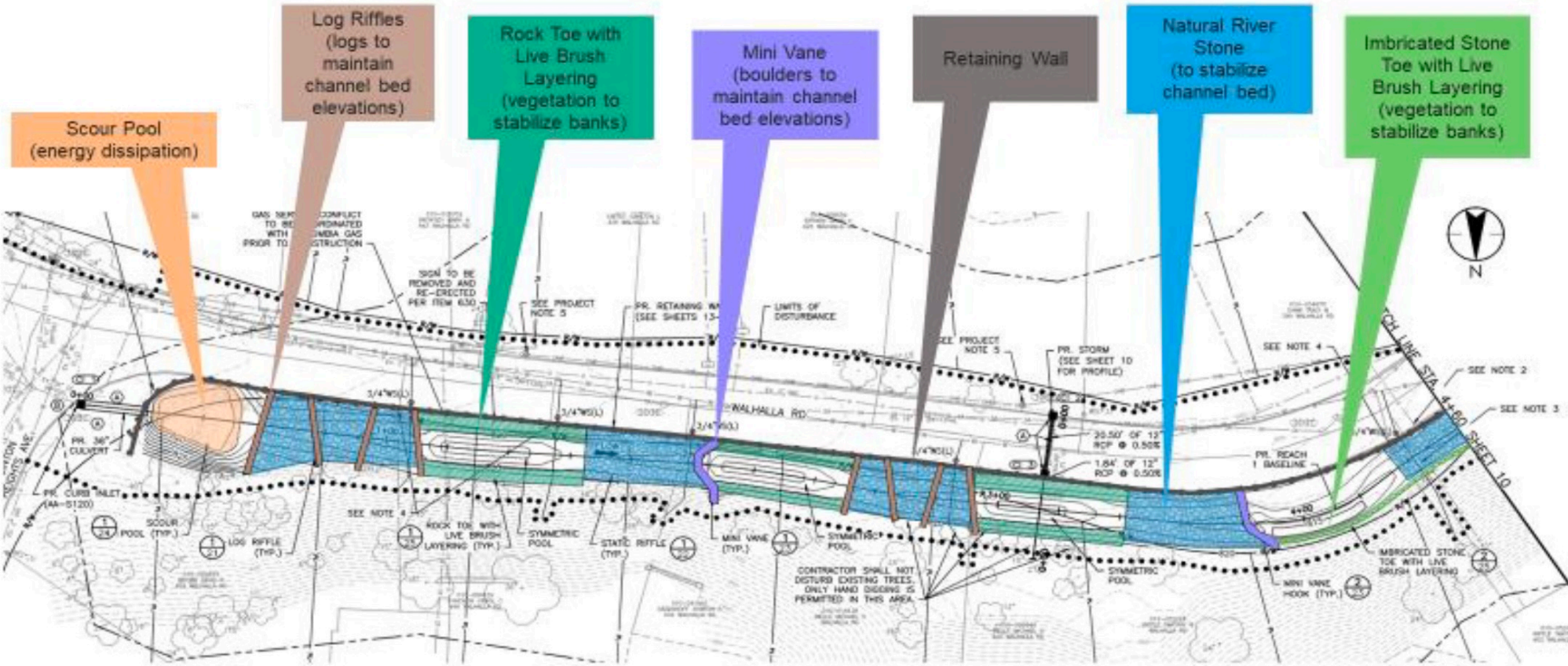
 <h4>Lateral Lining</h4> <ul style="list-style-type: none">• Keeps rainwater out of sanitary sewer• Seals cracks and small breaks in pipe that carry rain away from your home to sewers	 <h4>Roof Water Redirection</h4> <ul style="list-style-type: none">• Redirects rainwater away from your home and to the street, so that it can't enter the sewer through connection joints around your home	 <h4>Sump Pumps</h4> <ul style="list-style-type: none">• Collects rainwater around your home's foundation• Discharges rainwater into a pipe that discharges to the street	 <h4>Green Infrastructure</h4> <ul style="list-style-type: none">• Filters rainwater from the street• Removes pollutants and trash• Makes rainwater cleaner when it reaches rivers and streams
---	--	---	---

BLUE PRINT
COLUMBUS
Cleaner streams.
Stronger neighborhoods.

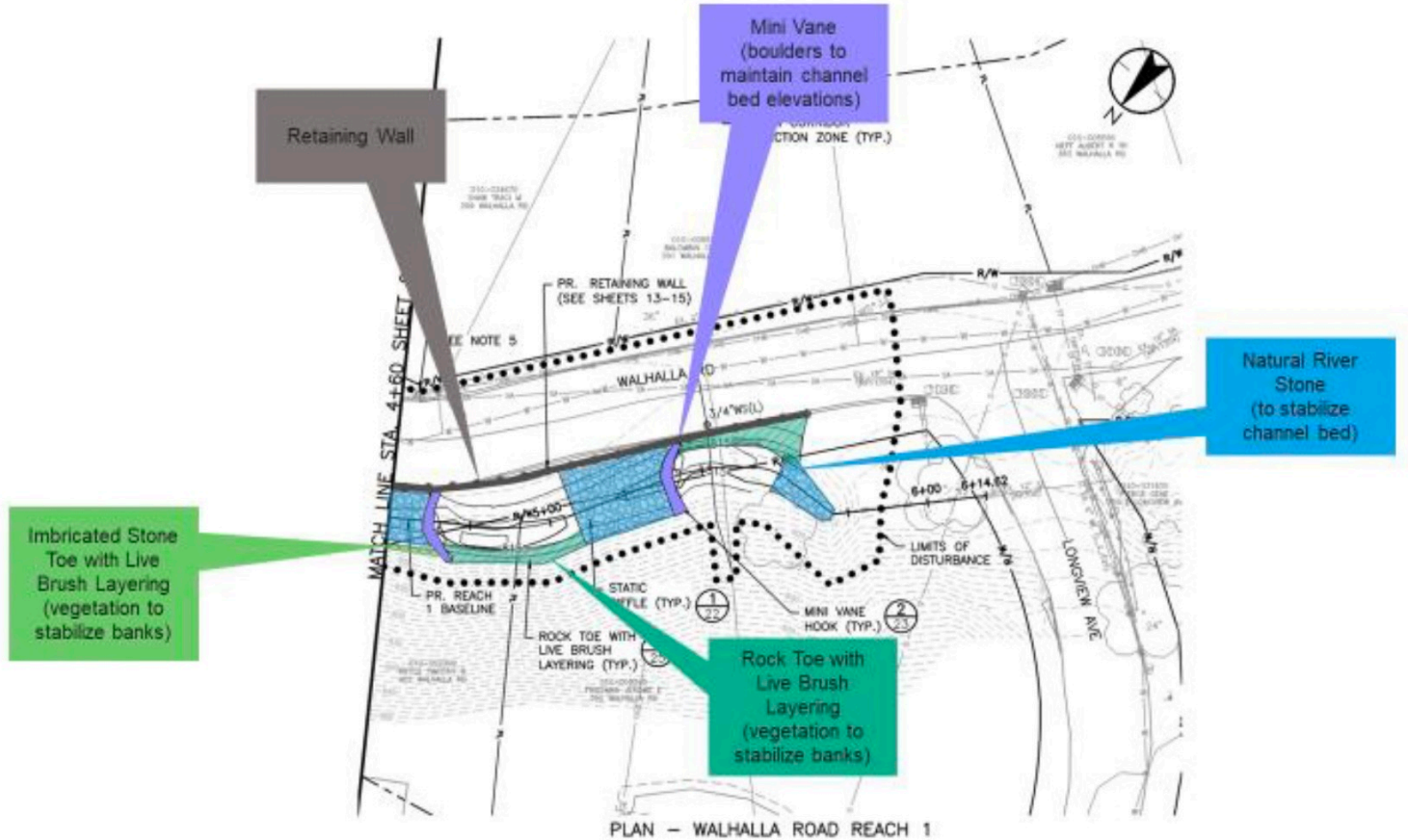
THE CITY OF
COLUMBUS
Austrian & Gayette, Mayor
DEPARTMENT OF
PUBLIC UTILITIES

17

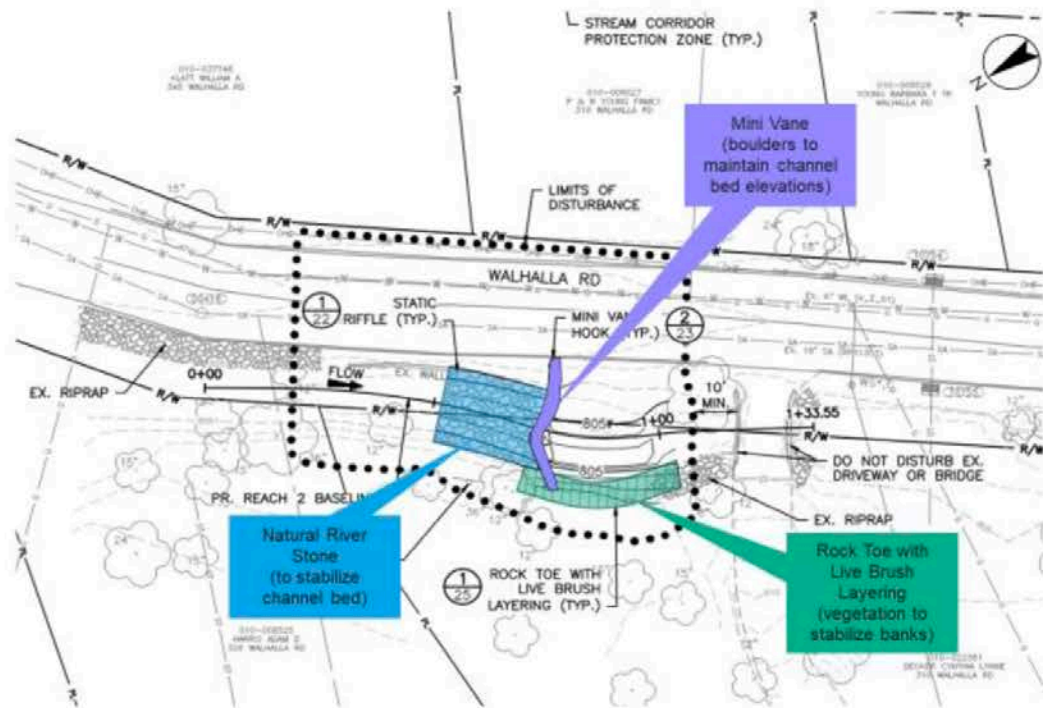
Detailed Design Overview



Detailed Design Overview



Detailed Design Overview



City Proposed Treatments

Live Brush Layering



**BLUE
PRINT
COLUMBUS**
Cleaner streams.
Stronger neighborhoods.

THE CITY OF
COLUMBUS
ANDREW J. GANNON, MAYOR
DEPARTMENT OF
PUBLIC UTILITIES



Retaining Wall



Trees will be lost and not replaced within the Ravine

The table at the right from the 60% Design plan shows 11 trees.

At a January 12 meeting with representatives from the Save Walhalla Ravine Organizing Committee, the Blueprint team and Stantec reported that:

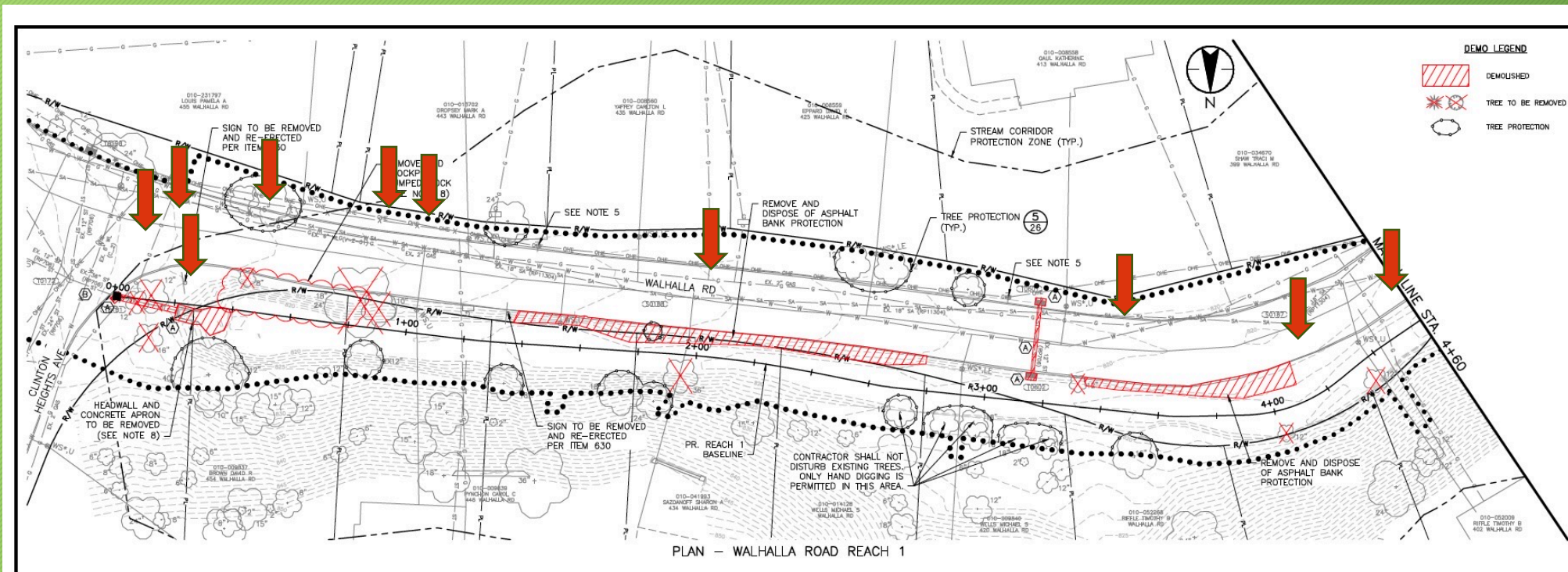
- 14 mature trees will be cut down due to the plan
- 8 trees will be “replaced” by container trees (2.5 inches) within the ravine.
 - The City intends to plant another 15 container trees (2.5 inches) in other areas of Columbus.

The City posted in an online document marked January 2024 that “Currently, there are 11 trees slated for removal: ten 18” dbh trees and one 48” dbh tree as well as other small vegetation (sic)”

TREE REMOVAL SUMMARY TABLE				
ADDRESS	DIAMETER	SPECIES	REASON	MINIMUM TREE REPLACEMENTS
310 WALHALLA ROAD	18"	OAK	STREAM RESTORATION	2
402 WALHALLA ROAD	12"	ASH	STREAM RESTORATION	1
402 WALHALLA ROAD	12"	MAPLE	STREAM RESTORATION	1
402 WALHALLA ROAD	12"	BLACK CHERRY	STREAM RESTORATION	1
402 WALHALLA ROAD	12"	ELM	STREAM RESTORATION	1
434 WALHALLA ROAD	36"	OAK	STREAM RESTORATION	5
446 WALHALLA ROAD	10"	MAPLE	STREAM RESTORATION	1
446 WALHALLA ROAD	18"	SYCAMORE	STREAM RESTORATION	2
446 WALHALLA ROAD	24"	SYCAMORE	STREAM RESTORATION	3
454 WALHALLA ROAD	8"	ASH	STREAM RESTORATION	1
454 WALHALLA ROAD	12"	MAPLE	STREAM RESTORATION	1
454 WALHALLA ROAD	12"	MULBERRY	STREAM RESTORATION	1
454 WALHALLA ROAD	16"	OAK	STREAM RESTORATION	2
TOTAL				22

City Plan: Remove trees and canopy

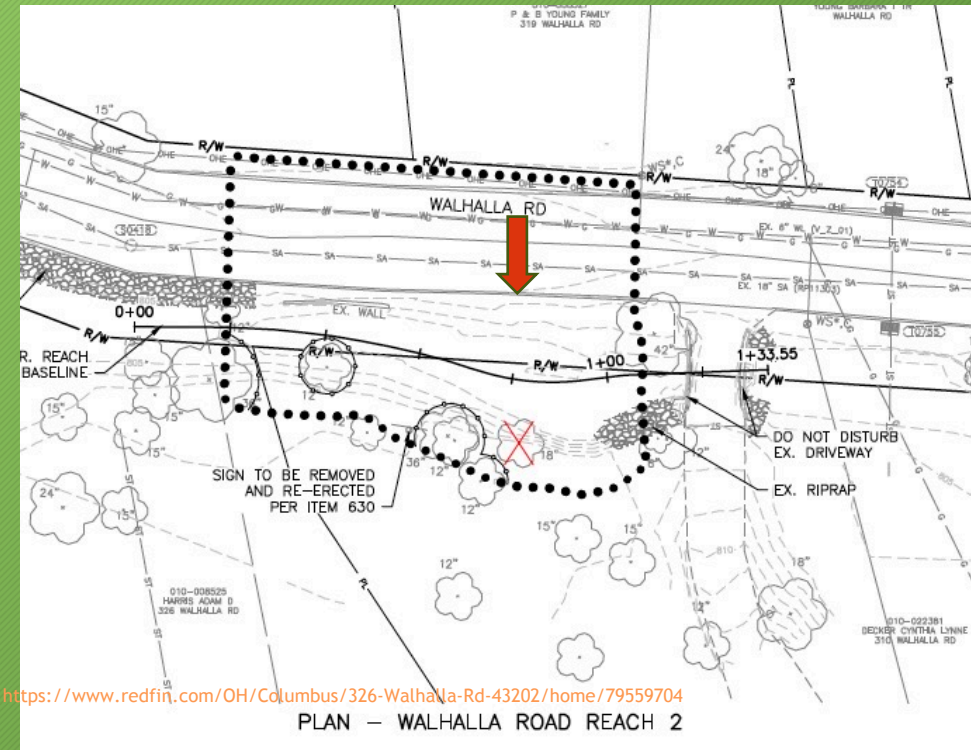
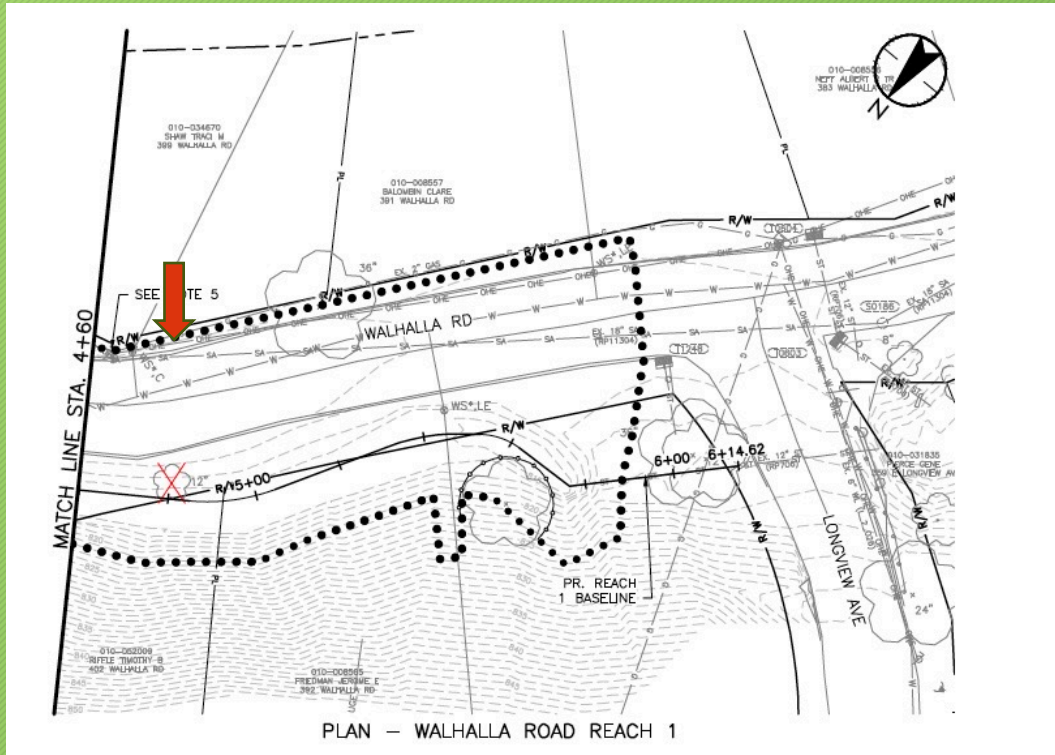
10 large trees will be lost in this section as indicated by the red arrows



Per the city, only trees that are larger than 10" are counted as trees; so, the loss of trees is greater than is represented on plans

City Plan: Remove trees and canopy

2 large trees will be lost in these sections - see the **red arrow**



Note: only trees that are larger than 10" are counted as trees; so, the loss of trees is greater than is represented on plans

City Plans: Road reconstruction

- Impervious surfaces are being used for the road reconstruction - asphalt and pre-fabricated retaining walls- are counter to the Blueprint's green infrastructure goals.
- The retaining wall will not reduce the speed of the water nor absorb the water flowing through the ravine.
- Decommissioning the roadway or at least narrowing the roadway and using pervious surfaces would be a more effective and natural approach.

City Plans: Ignore the needs of primary ravine users - pedestrians

- The Blueprint team reported that a traffic study found that 120 motor vehicles use the ravine roadway per a traffic study.
 - Per road standards, a road carrying less than 400 vehicles is considered a low volume road if located outside of the city.
- Guardrails are intended to protect motorists not pedestrians
- We believe:
 - The needs of motor vehicles are being prioritized over pedestrians and cyclists
 - The proposed barricades will limit view of the stream bed by pedestrians
 - Installing highway grade guardrails will signal that this is highway not primarily a place for pedestrians

City Plans: unclear science is being used to justify the City Plan

- The current plan does not address upstream stormwater inflows.
 - Stormwater is flowing into the ravine from sources east of Indianola. The City plan does not address this problem.
- Stantec prepared a study for the entire ravine from Clinton Heights through High Street.
 - This study considers 3 alternatives intended to meet the goals of Blueprint Columbus which are to reduce stormwater runoff and pollutants that run into the Olentangy river. The City has been unwilling to share why the alternatives were not selected.
- It is unclear if the current plan (Reach 1) as currently proposed will meet the goals of Blueprint Columbus.
 - The method of estimation has not been validated for use in a stream like Walhalla.
- The stated goal of stopping the deterioration of the roadway could be accomplished by closing this section of the roadway which provides no access to current landowners.
 - It is not needed for trash, recycling and or emergency vehicles. These services can have access to the ravine and residents via Brynhild and Longview.
- As proposed, numerous trees will be cut down.
 - The loss of habitat and damage to the ecosystem has not been fully considered

Our plea to the City of Columbus - be smart like our barred owl

- The City of Columbus' Walhalla Ravine "Restoration" plan will ultimately be harmful and disruptive to the residents and natural environment.
- This is road project that is being disguised as a ravine "restoration." (75 percent of the cost is for the road, not erosion control.)
- The residents who use the Walhalla Ravine daily request that the City revise the current plan to focus on stream restoration, water quality improvement, erosion control, tree canopy preservation, and strongly consider pedestrian and non-motor vehicle usage of the ravine pathway.



What we understand about the City's decision pathway

- 1) DPU (Department of Public Utilities) is the lead city agency for the Blueprint and this project
- 2) DPS (Department of Public Services) is demanding the roadway upgrade be included
- 3) DPU and DPS are accountable to the Mayor
- 4) City Council can protect homeowners who refuse to provide an easement and intervene before funds are awarded for the contract

Open questions

- 1) How or when Ohio EPA will review/approve the project
- 2) Source(s) of funding for the project and primary use of funds for roadway reconstruction
- 3) What level of Environmental Impact Study needs to be completed and approved at the Federal and State level
- 4) Option to decommission the roadway or narrow roadway reconstruction to allow for wider stream and to establish pedestrian walkways and replant more tree
- 5) Specifics to be included in the requests for easements

How you can help

- Talk to your friends and neighbors
- Attend the public meeting - raise concerns & ask questions
 - Wednesday 2/28/24
 - 5:30-7PM (arrive early)

Contact City of Columbus Officials

Leadership

- Mayor Andrew J. Ginther
- Council Member Lourdes Barroso de Padilla (chairs public services and transportation) jicaceres@columbus.gov
- Councilmember Rob Dorans (serves our district) radorans@columbus.gov
- Councilmember Christopher L. Wyche (chair public utilities and sustainability) clgolterman@columbus.gov

90 West Broad Street
Columbus, Ohio 43215

- **Contact Blueprint Columbus**
 - blueprint@columbus.gov
- **Contact 311**
Online at - columbus.gov/311
Email at - 311@columbus.gov

Key Messages

The City of Columbus' Walhalla Ravine "Restoration" plan will ultimately be harmful and disruptive to the residents and natural environment.

The City is proposing a road project that is being disguised as a ravine "restoration". The primary consideration is building a new roadway, not restoring the ravine and improving of its eco-system.

- ❖ 75% of the project cost is for the roadway improvement to install a prefabricated wall to support the new roadway being constructed from Clinton Heights to Longview.
- ❖ The roadway will be doublewide asphalt pavement and include highway guardrails.
- ❖ Some trees will be removed to make way for the new roadway.
- ❖ Rather than use green infrastructure, the City plans a low cost engineered approach to managing erosion.

We want a healthier ecosystem and an area where residents and visitors can feel the restorative/meditative effects of being in nature.

We request that the City revise the current plan to focus on stream restoration, water quality improvement, erosion control, tree canopy preservation, and strongly consider pedestrian and non-motor vehicle usage of the ravine pathway.

Join us!

savewalhallaravine@gmail.com

Savetheravine.com

